

## **Monitoring 2021 Quarter 1**

### **Water Level Monitoring Data**

The attached table summarizes the results of the Q1 2021 San Antonio Basin Water Level Monitoring for the wells in the monitoring network, includes the status of current access agreements, and depth to water measurements for all wells that were able to be accessed during the sampling event. Green highlighting indicates that the San Antonio GSA currently has an access agreement for the given well, or that there are no special access requirements. Yellow highlighting indicates that the well is privately owned and the GSA does not currently have an access agreement. These wells were not monitored during this event. Red highlighting indicates that the well owner declined to sign an access agreement and so the well was not monitored. The following list summarizes some of the noteworthy events or observations that took place during this sampling event:

- Well 17K2 on the south side of Barka Slough remains inaccessible due to vegetation.
- A water level measurement was not obtained from 13C1 because the pump was on
- The transducer communication cable for well 16C4 is not working properly - the cable will be returned to the supplier for repair and reinstalled.
- The water level in the Stephens Well (Kick On Ranch) was not measured. Access will need to be re-negotiated if possible.

### **Streamflow Data**

Annual graphs of available streamflow data are provided at the links below:

- [https://nwis.waterdata.usgs.gov/nwis/uv?cb\\_00060=on&cb\\_00065=on&format=gif\\_default&site\\_no=11135800&period=&begin\\_date=2019-01-01&end\\_date=2020-03-10](https://nwis.waterdata.usgs.gov/nwis/uv?cb_00060=on&cb_00065=on&format=gif_default&site_no=11135800&period=&begin_date=2019-01-01&end_date=2020-03-10) – USGS 11135800 San Antonio C A Los Alamos CA
- [https://nwis.waterdata.usgs.gov/nwis/uv?cb\\_00060=on&cb\\_00065=on&format=gif\\_stats&site\\_no=11136100&period=&begin\\_date=2019-01-01&end\\_date=2020-03-09](https://nwis.waterdata.usgs.gov/nwis/uv?cb_00060=on&cb_00065=on&format=gif_stats&site_no=11136100&period=&begin_date=2019-01-01&end_date=2020-03-09) – USGS 11136100 San Antonio C NR Casmalia CA

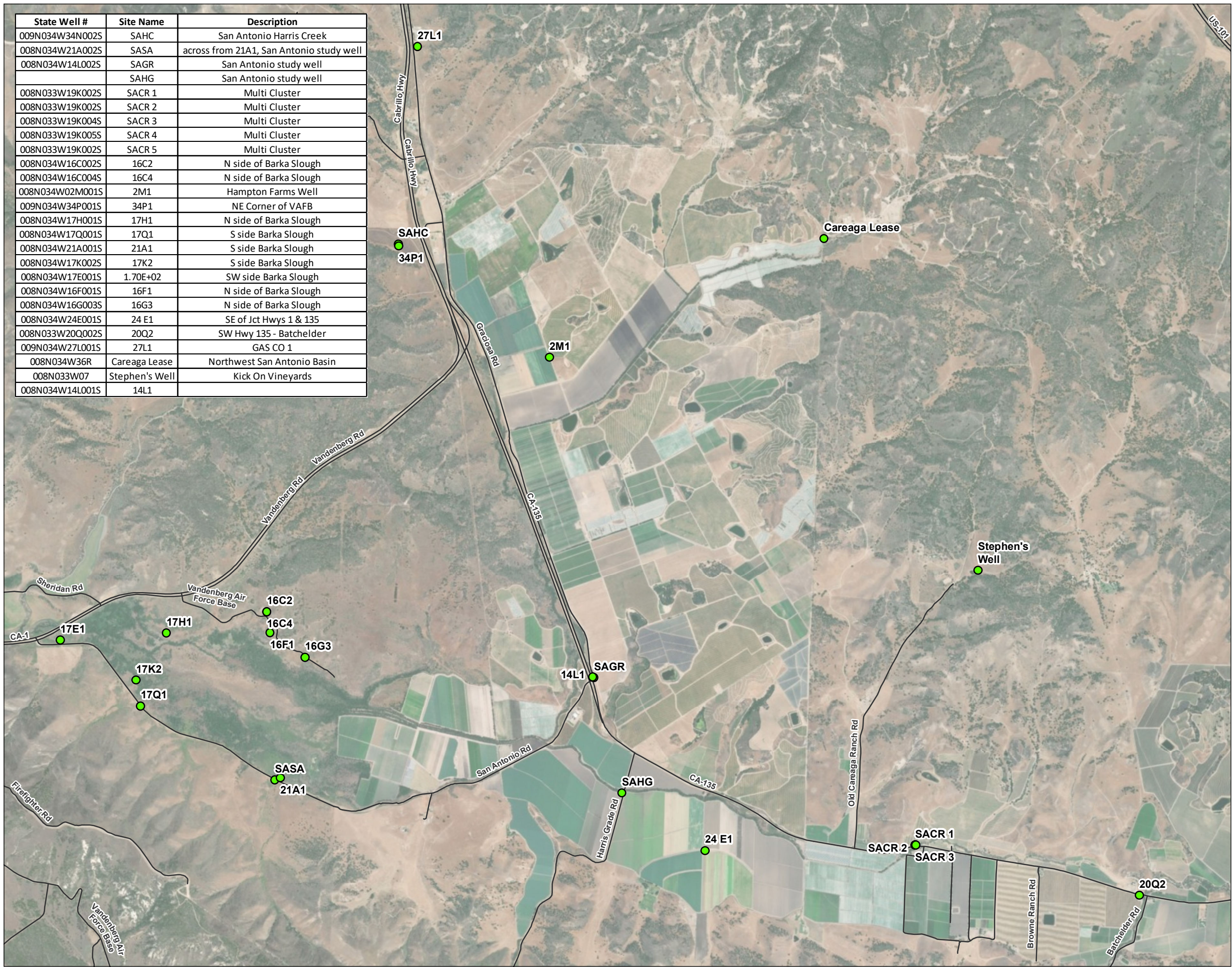
### **Additional Comments**

- We noticed brush clearing was underway at the overpass of San Antonio Rd and Harris Grade Rd potential stream gage locations. We will be following up with the County and DWR.
- Plots of groundwater levels and streamflow data versus time (including historical data) will be prepared and made available in the Annual Monitoring Report.
- We will continue to work with the GSA to resolve well access issues.





State Well #	Site Name	Description
009N034W34N002S	SAHC	San Antonio Harris Creek
008N034W21A002S	SASA	across from 21A1, San Antonio study well
008N034W14L002S	SAGR	San Antonio study well
	SAHG	San Antonio study well
008N033W19K002S	SACR 1	Multi Cluster
008N033W19K002S	SACR 2	Multi Cluster
008N033W19K004S	SACR 3	Multi Cluster
008N033W19K005S	SACR 4	Multi Cluster
008N033W19K002S	SACR 5	Multi Cluster
008N034W16C002S	16C2	N side of Barka Slough
008N034W16C004S	16C4	N side of Barka Slough
008N034W02M001S	2M1	Hampton Farms Well
009N034W34P001S	34P1	NE Corner of VAFB
008N034W17H001S	17H1	N side of Barka Slough
008N034W17Q001S	17Q1	S side Barka Slough
008N034W21A001S	21A1	S side Barka Slough
008N034W17K002S	17K2	S side Barka Slough
008N034W17E001S	1.70E+02	SW side Barka Slough
008N034W16F001S	16F1	N side of Barka Slough
008N034W16G003S	16G3	N side of Barka Slough
008N034W24E001S	24 E1	SE of Jct Hwys 1 & 135
008N033W20Q002S	20Q2	SW Hwy 135 - Batchelder
009N034W27L001S	27L1	GAS CO 1
008N034W36R	Careaga Lease	Northwest San Antonio Basin
008N033W07	Stephen's Well	Kick On Vineyards
008N034W14L001S	14L1	

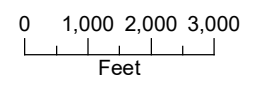
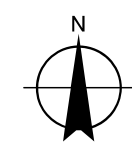


**DRAFT FIGURE 1**  
**Wells in Western Portion**  
**of San Antonio Basin**  
**San Antonio Basin Water**  
**Level Monitoring**

**LEGEND**

- Monitoring Well
- Major Road

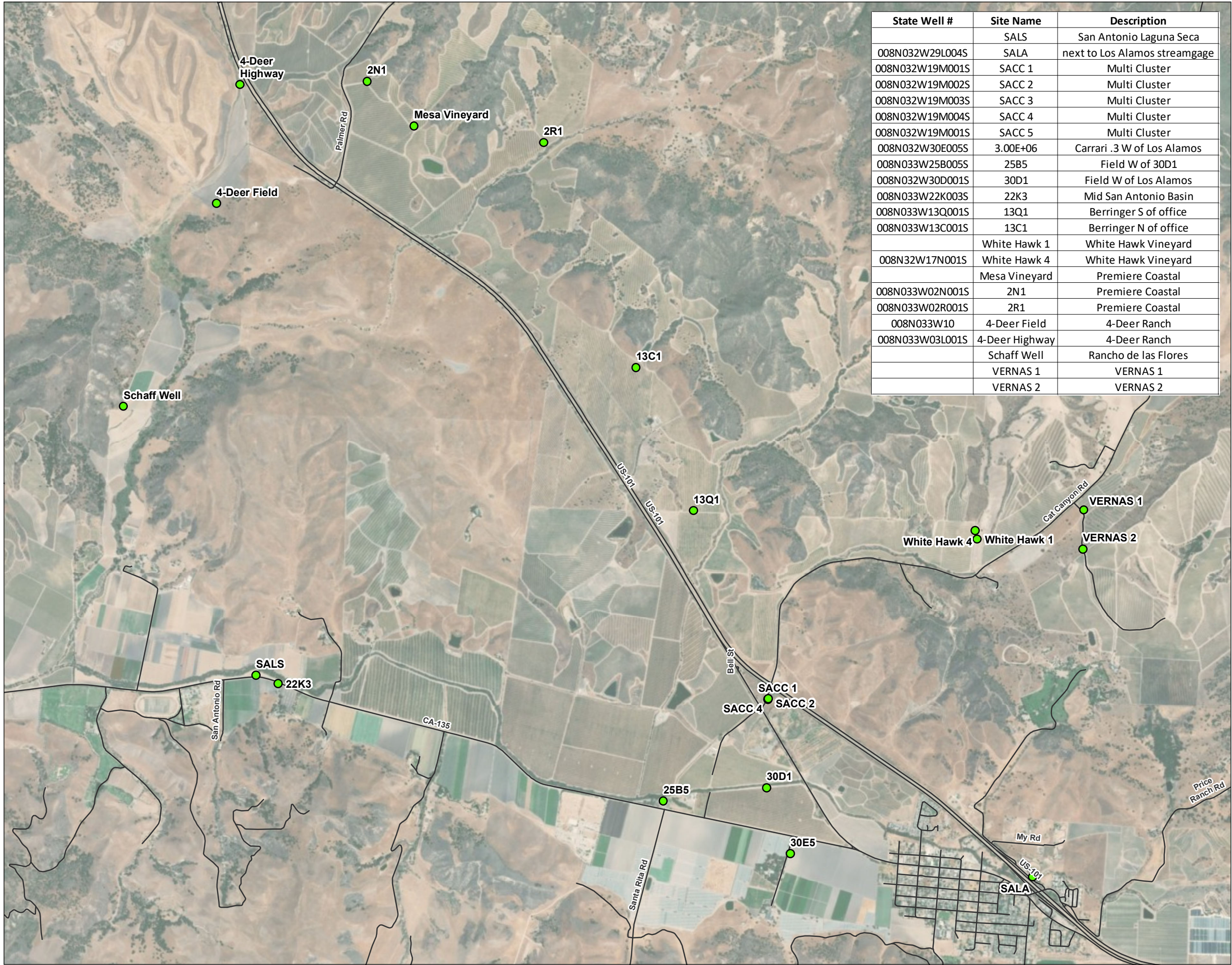
**NOTES:**



Date: July 17, 2019  
 Data Sources:







State Well #	Site Name	Description
	SALS	San Antonio Laguna Seca
008N032W29L004S	SALA	next to Los Alamos streamgage
008N032W19M001S	SACC 1	Multi Cluster
008N032W19M002S	SACC 2	Multi Cluster
008N032W19M003S	SACC 3	Multi Cluster
008N032W19M004S	SACC 4	Multi Cluster
008N032W19M001S	SACC 5	Multi Cluster
008N032W30E005S	3.00E+06	Carrari .3 W of Los Alamos
008N033W25B005S	25B5	Field W of 30D1
008N032W30D001S	30D1	Field W of Los Alamos
008N033W22K003S	22K3	Mid San Antonio Basin
008N033W13Q001S	13Q1	Berringer S of office
008N033W13C001S	13C1	Berringer N of office
	White Hawk 1	White Hawk Vineyard
008N32W17N001S	White Hawk 4	White Hawk Vineyard
	Mesa Vineyard	Premiere Coastal
008N033W02N001S	2N1	Premiere Coastal
008N033W02R001S	2R1	Premiere Coastal
008N033W10	4-Deer Field	4-Deer Ranch
008N033W03L001S	4-Deer Highway	4-Deer Ranch
	Schaff Well	Rancho de las Flores
	VERNAS 1	VERNAS 1
	VERNAS 2	VERNAS 2

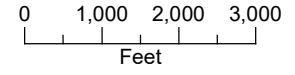
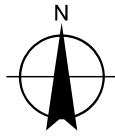
**DRAFT FIGURE 2**

**Wells in Central Portion of San Antonio Basin**  
San Antonio Basin Water Level Monitoring

**LEGEND**

- Monitoring Well
- Major Road

**NOTES:**



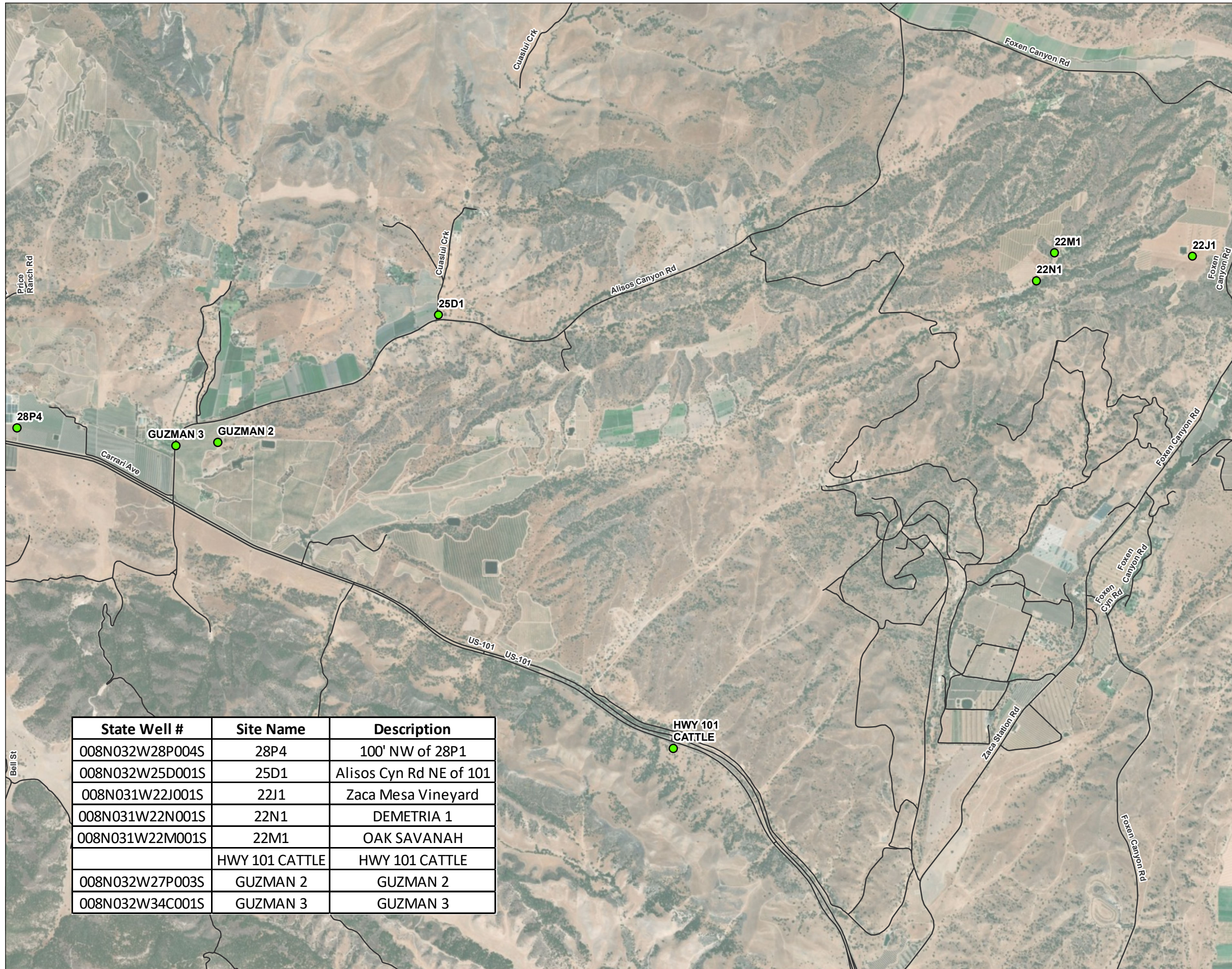
Date: July 17, 2019  
Data Sources:





**DRAFT FIGURE 3**

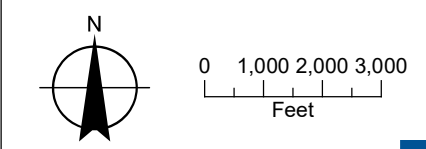
**Wells in Eastern Portion  
of San Antonio Basin**  
San Antonio Basin Water  
Level Monitoring



**LEGEND**

- Monitoring Well
- Major Road

**NOTES:**



Date: July 17, 2019  
Data Sources:



State Well #	Site Name	Description
008N032W28P004S	28P4	100' NW of 28P1
008N032W25D001S	25D1	Alisos Cyn Rd NE of 101
008N031W22J001S	22J1	Zaca Mesa Vineyard
008N031W22N001S	22N1	DEMETRIA 1
008N031W22M001S	22M1	OAK SAVANAH
	HWY 101 CATTLE	HWY 101 CATTLE
008N032W27P003S	GUZMAN 2	GUZMAN 2
008N032W34C001S	GUZMAN 3	GUZMAN 3