



Scope of Work and Fee Estimate

To: Stephanie Bertoux, Executive Director,
San Antonio Basin Groundwater Sustainability Agency

From: Sydney Robertson, GIT, Michael McAlpin, PG, & David O'Rourke, PG, CHg, PE,
GSI Water Solutions, Inc.

Date: June 26, 2025

RE: Barka Slough Area Well Access Trails Vegetation Trimming and Oversight

GSI Water Solutions, Inc. (GSI), is pleased to present this scope of work and fee estimate for planning and providing oversight of vegetation trimming for the San Antonio Basin Groundwater Sustainability Agency (SABGSA). Vegetation trimming is proposed along the access trails to wells included in the San Antonio Creek Valley Groundwater Basin (Basin) Groundwater Level Monitoring Network (Monitoring Network) near Barka Slough (Slough). GSI has developed this proposal based on recommendations included in the Basin's second quarter of 2025 (2Q2025) Quarterly Groundwater Level Monitoring Technical Memorandum and at the request of Ms. Bertoux in an email dated June 6, 2025.

Vegetation along access trails to monitoring wells included in the Basin Monitoring Network, specifically on Vandenberg Space Force Base (VSFB) property near the Slough, becomes overgrown and needs to be trimmed to access the monitoring wells. Access trails to nine wells (see orange highlighted wells in attached Figure 1), totaling approximately 3,230 feet, are proposed for vegetation trimming. In general, vegetation to be trimmed consists of coyote bush, poison oak, and bull rush.

Scope of Work

SABGSA's legal counsel has determined this scope of work classifies as prevailing wage. GSI understands the contractors would contract directly with GSI. GSI's scope of work and cost estimate described herein for the vegetation trimming includes the request and retrieval of an updated cost estimate from Cut & Clean Landscaping (C&C), scheduling/coordinating fieldwork, and conducting oversight of the vegetation trimming. C&C was contracted to perform this scope of work for the previous four rounds of vegetation trimming (February 2023, September 2023, August 2024, and January 2025). C&C is familiar with the scope of work and has active VSFB clearance to access and perform the work on VSFB property. These services would be performed at the specific direction of the SABGSA Executive Director in accordance with the terms of GSI's Master Services Agreement with the SABGSA. These services would be performed on a time and materials basis that will not exceed the authorized budget without written approval by the SABGSA Executive Director.

General Assumptions

- C&C's scope of work will be completed in one day.
- There will be no delay of work caused by unforeseen circumstances (e.g., access issues, inclement weather, or biological encounters).

Fee Estimate

GSI's proposed fee to complete the tasks on a time-and-materials basis is **\$10,000**. The proposed budget is based on GSI's 2025 fee schedule (attached). The rates included in the 2025 fee schedule are valid through the 2025 calendar year and are subject to change thereafter. This budget will not be exceeded without the SABGSA's prior approval

Tasks	Labor Hours	Labor Cost	Outside Services	Direct Expenses	Total
Task 1 – Planning, Contractor Updated Scope of Work, and Scheduling	12	\$2,000	\$0	\$0	\$2,000
Task 2 - Vegetation Trimming and Oversight	12	\$1,908	\$5,952	\$140	\$8,000
Project Totals	24	\$3,908	\$5,952	\$140	\$10,000

Note:

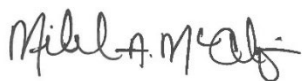
¹ Cut and Clean Landscape Services, Inc. quote attached. The price shown includes a 10 percent subcontractor markup.

Schedule

The scheduling of this work is dependent on contractor availability and will be scheduled following bird nesting season (approximately September 1, 2025). GSI will attempt to schedule the vegetation trimming in conjunction with the Basin 3Q2025 groundwater level monitoring event to reduce mobilizations.

We thank you for your consideration of this proposal and allowing GSI to continue to serve the interests of the SABGSA. Please contact us if you have any questions.

Sincerely,
GSI Water Solutions, Inc.



Michael McAlpin, PG
Supervising Hydrogeologist



Dave O'Rourke, PG, CHG, PE
Principal Hydrogeologist



Sydney Robertson, GIT
Project Hydrogeologist

Approval

You may indicate your approval of this proposal by signing on the space provided below.

Approved by

Date

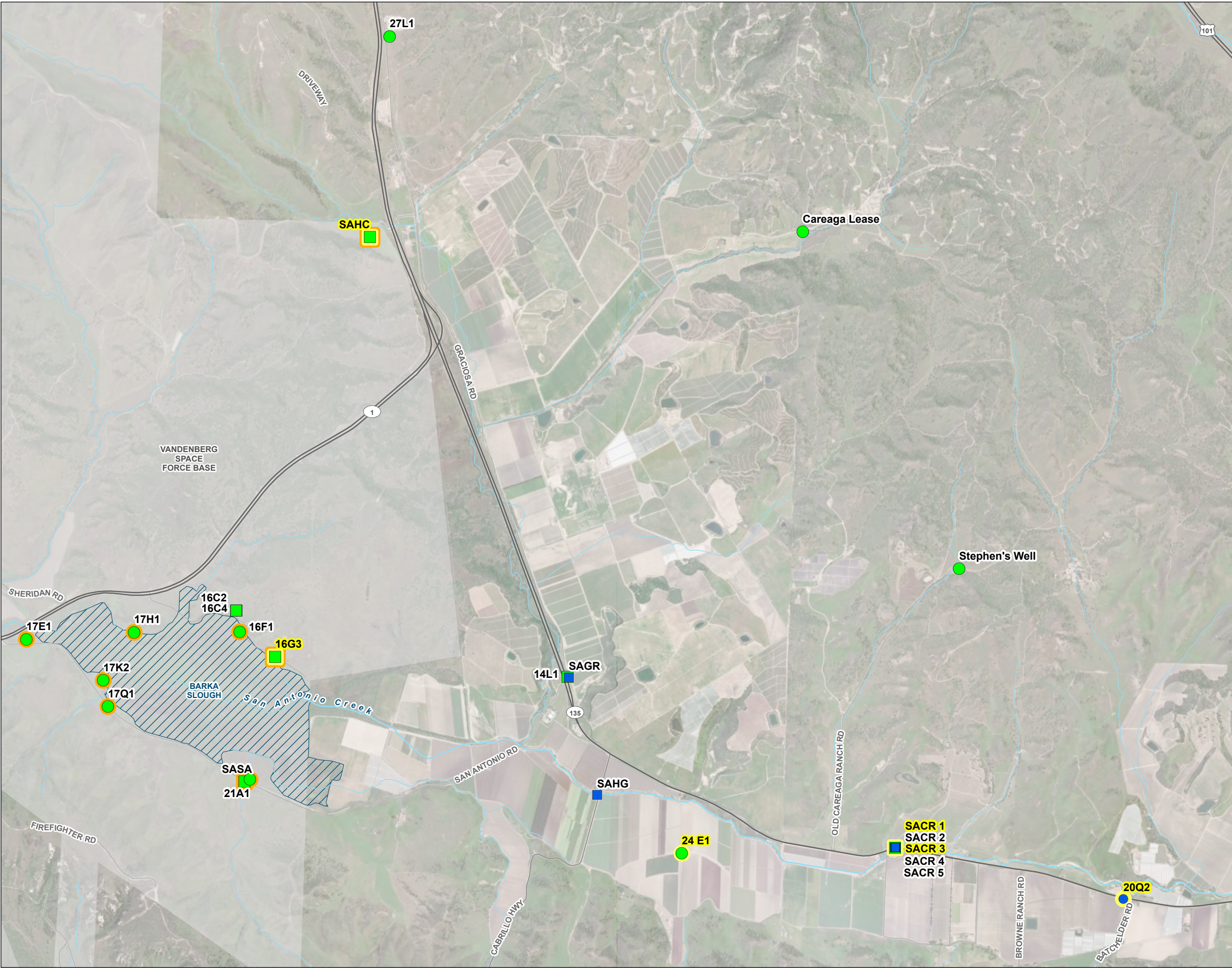


FIGURE 1
Wells Located in the
Western Portion of the
San Antonio Creek Valley
Groundwater Basin

LEGEND

Sample Methods

- Transducer Well
- Manually Measured Well

Aquifer of Completion

- Careaga Sand Well
- Paso Robles Formation Well

Representative Monitoring Site

- Representative Monitoring Site

Vegetation Trimming Location

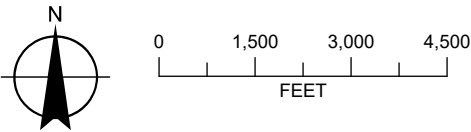
- Vegetation Trimming Location

All Other Features

- Barka Slough
- Vandenberg Space Force Base
- Major Road
- Watercourse

NOTES

- 1. SACR 1 is screened in the Careaga Sand.
- 2. SACR 2, SACR 4, and SACR 5 depth to water measurements are collected manually on a quarterly basis.



Date: June 26, 2025
Data Sources: BLM, ESRI, ODOT, USGS,
Imagery (2022)





2025 GSI Fee Schedule

Labor Category	Hourly Rate
Technical Professionals	
Principal	\$275 – \$360
Supervising	\$220 – \$310
Managing	\$175 – \$230
Consulting	\$155 – \$195
Project	\$140 – \$175
Staff	\$125 – \$160
Other Services	
GIS/Graphics/Database	\$130 – \$185
Editor/Documents	\$130 – \$155
Administration	\$95 – \$125

The hourly rate for trial preparation and expert witness testimony is 1.5 times the standard billing rate shown above.

Expenses

- **Mileage:** IRS authorized rate/mile plus 10 percent markup
- **Direct expenses and outside services:** Cost plus 10 percent markup
- **Enterprise GIS:** \$100 per month for the duration of use

**Hourly rates are subject to annual increases on the contract anniversary date.*

CUT & CLEAN LANDSCAPE
SERVICES, INC.

758 Calle Plano
Camarillo, CA. 93012

info@cutncleanlandscapes.com

Estimate

Date	Estimate #
6/19/2025	475

Name / Address
GSI Water Solutions Inc Michael McAlpin Vandenberg Space Force Base Lompoc, CA 93436

Project	
Description	Total
****SCOPE OF WORK****	
-Grubbing pathways at 9 sites -Create a pathway from San Antonio Creek Road East to Well Heads as shown by customer. Location-San Antonio Road East - Barka Slough, Vandenberg Space Force Base	
Laborers / Operator, Foreman	5,411.28
Notes - Any work stoppage orders from customer or Base personnel, will be billed at a 2 hour minimum of \$85.47 labor rate per crew member. - Cut & Clean will not be responsible for any Biological Concerns. GSI representative will monitor any biological concerns	
Accepted by:	
Name & Date:	
Total	\$5,411.28