



TECHNICAL MEMORANDUM

San Antonio Creek Valley Groundwater Basin Quarterly Groundwater Level Monitoring – Second Quarter 2025

To: Ms. Stephanie Bertoux, Executive Director,
San Antonio Basin Groundwater Sustainability Agency

From: Sydney Robertson, GIT, Michael McAlpin, PG, & David O'Rourke, PG, CHg, PE,
GSI Water Solutions, Inc.

Attachments: Tables:
Table 1. Second Quarter 2025 Groundwater Level Measurements – Depth to Water
Table 2. Second Quarter 2025 Groundwater Level Measurements – Groundwater Elevation

Figure:
Figure 1. Wells Included in the San Antonio Creek Valley Groundwater Basin Groundwater Monitoring Network

Date: June 25, 2025

Introduction

On behalf of the San Antonio Basin Groundwater Sustainability Agency (SABGSA), GSI Water Solutions, Inc. (GSI) completed the second quarter 2025 (2Q2025) San Antonio Creek Valley Groundwater Basin (Basin) groundwater level monitoring event (monitoring event) on June 3rd and 4th, 2025. Prior to each quarterly monitoring event, GSI contacts well owners/property managers to coordinate access to the wells and request that wells be shut off for at least 8 hours before the monitoring event to facilitate measurement of static groundwater levels. Well owners/property managers were notified on May 19th, 2025. GSI performed site visits to measure and record static groundwater levels in wells on June 3rd and 4th, 2025.

GSI was able to successfully measure depth to groundwater in 36 of the 41 wells that have access agreements in place during the 2Q2025 monitoring event. Tables 1 and 2 provide the status of the current well access agreements, and Figure 1 displays the well locations. The following text and tables summarize the results of the 2Q2025 monitoring event.

2Q2025 Groundwater Level Monitoring Event Summary

The attached Tables 1 and 2 summarize the results of the 2Q2025 monitoring event for the wells in the Basin Groundwater Level Monitoring Network (Monitoring Network). The tables include the status of the current well access agreements, depth to groundwater measurements (Table 1), and calculated groundwater elevations (Table 2) for all wells that were able to be accessed during the monitoring event. Wells identified as a Representative Monitoring Site (RMS) in the Basin's Groundwater Sustainability Plan (GSP) are identified in Table 2 and denoted with their respective sustainable management criteria (i.e., minimum threshold and measurable objective). The following is a summary of observations from the 2Q2025 monitoring event:

- The five wells with an active well access agreement that did not have a groundwater level measurement collected during the 2Q2025 monitoring event were 2M1, 2N1, Stephen's Well, 13C1, and SAHC.
 - No water level measurement was collected from well 2M1 due to the risk of the sounder becoming stuck in the well. Historically there have been instances of the sounder becoming stuck in the well during monitoring. Groundwater level monitoring at well 2M1 has been halted pending the installation of a sounding tube. A water level measurement at well 2M1 was last recorded during the 1Q2022 monitoring event. Installation of a sounding tube at 2M1 has been evaluated, however installation costs may preclude completion of the work. Therefore, well 2M1 has been removed from the Basin Monitoring Network and 14L1 is being evaluated as a replacement RMS well for 2M1 due to their locations within Harris Canyon, consistent water levels, and water level trends.
 - Premiere Coastal Vineyards (PCV) met with GSI at 2N1 to confirm the access port through which to deploy the water level sounding device. However, a cable had been deployed through the access port. Consequently, there was not enough clearance for the water level sounding probe to be deployed through the access port with the cable in place. On-site PCV staff were uncertain of the cable's purpose and planned to have the access port clearance limitation remedied prior to the 3Q2025 monitoring event. A water level measurement at well 2N1 was last recorded during the 1Q2024 monitoring event.
 - Kick-On Ranch informed GSI on Monday, June 2nd, 2025, that well maintenance on Stephen's Well was scheduled from Monday, June 2nd through Thursday, June 5th, 2025. As a result, no water level measurement was collected from Stephen's Well.
 - A groundwater level was not measured at well 13C1. During the 2Q2025 monitoring event, GSI observed a new wellhead had been installed on well 13C1. GSI was unsuccessful in attempts to contact Sran Vineyards to confirm the correct access port through which to deploy the groundwater level sounding device. GSI will coordinate with Sran Vineyards to determine the correct access port prior to the 3Q2025 monitoring event.
 - No water level measurement was collected from well SAHC due to overgrowth of vegetation. GSI field staff were unable to safely access the well.
- Wells without current well access agreements, including RMS wells, are planned to be evaluated for replacement using existing Monitoring Network wells and potential candidate wells to be identified using the data collected from the SABGSA Well Registration Program (see Recommendations, below).
- Water level data were successfully downloaded from the pressure transducers (transducers) that were installed in wells 13C1, 22K3, SACR 3, 14L1, and 16G3 during the 4Q2024 monitoring event. The depth setting of the transducers were adjusted during the 1Q2025 monitoring event to ensure the transducers were within the devices' operable pressure detection range.
- The Reference Point (location from which groundwater levels are measured at a well) was remeasured for select wells during the 2Q2025 monitoring event, resulting in updates to the Reference Point Elevation (RPE) for Mesa Vineyard, 4-Deer Highway, 4-Deer Field, and 2R1.

Recommended Action Items

- Consider maintenance on wells 2N1 and Mesa Vineyard well to remove rusty material and oil from the water column. The water level reading device becomes coated in either rust or oil when lowered into the well, occasionally blocking the sensor.
- Perform a RPE Survey for the wells in the Monitoring Network in accordance with the Sustainable Groundwater Management Act (SGMA) well elevation accuracy requirements.
- Review SABGSA Well Registration Program data to identify existing candidate wells to incorporate into the Monitoring Network.
- Perform vegetation trimming for access routes to all wells located in the Barka Slough area prior to the 3Q2025 monitoring event.

Table 1. Second Quarter 2025 Groundwater Level Measurements – Depth to Water

State Well Number	Site Name	Well Type	Water Level Measurement Frequency/Type	Area	Total Depth (feet bgs)	Aquifer of Completion	DTW on 6/21/22 and 6/22/22	DTW on 9/15/22 and 9/16/22	DTW on 12/14/22 and 12/15/22	DTW on 3/15/23, 3/16/23 and 3/23/23	DTW on 6/20/23, 6/21/23 and 6/28/23	DTW on 9/12/23 and 9/13/23	DTW on 12/12/23 and 12/13/23	DTW on 2/27/24 and 2/28/24	DTW on 6/4/24 and 6/5/24	DTW on 8/27/24 and 8/28/24	DTW on 11/26/24 and 11/27/24	DTW on 2/25/25 and 2/26/25	DTW on 6/3/25 and 6/4/25	Notes on 6/3/25 and 6/4/25
009N034W34N002S	SAHC	Monitoring	Continuous/Transducer	West San Antonio Basin	90	Careaga Sand	73.93	74.07	74.20	74.43	74.34	74.06	73.86	73.52	73.06	72.54	71.78	71.05	--	Vegetation overgrown - could not safely access well.
008N034W21A002S	SASA	Monitoring	Continuous/Transducer	West San Antonio Basin	65	Careaga Sand	46.19	46.98	47.33	46.37	44.82	45.39	46.25	45.59	43.54	44.47	45.46	45.54	45.83	
008N034W14L002S	SAGR	Monitoring	Continuous/Transducer	West San Antonio Basin	90	Paso Robles Formation	64.50	66.88	65.72	64.18	62.18	62.31	61.81	60.62	60.13	61.30	61.41	61.16	62.72	
008N034W23H001S	SAHG	Monitoring	Continuous/Transducer	West San Antonio Basin	75	Paso Robles Formation	41.42	41.71	40.80	27.74	27.99	30.60	33.22	30.09	29.55	29.83	32.70	--	36.15	
008N033W22G001S	SALS	Monitoring	Continuous/Transducer	Central San Antonio Basin	70	Paso Robles Formation	39.44	39.34	39.69	31.15	29.29	28.64	29.83	26.88	26.17	27.96	29.63	30.39	31.41	
008N032W29L004S	SALA	Monitoring	Continuous/Transducer	Central San Antonio Basin	90	Paso Robles Formation	49.25	49.85	50.46	27.96	26.79	32.32	36.12	25.85	26.79	32.01	35.15	37.60	38.79	
008N033W19K002S	SACR 1	Monitoring	Continuous/Transducer	West San Antonio Basin	690	Careaga Sand	51.05	54.90	47.50	--	47.90	53.74	48.68	48.68	49.17	54.06	49.98	47.54	50.36	
008N033W19K003S	SACR 2	Monitoring	Quarterly/Discrete	West San Antonio Basin	540	Paso Robles Formation	81.30	83.33	72.58	--	77.38	79.39	73.10	72.08	75.67	84.68	73.11	72.46	78.15	
008N033W19K004S	SACR 3	Monitoring	Continuous/Transducer	West San Antonio Basin	350	Paso Robles Formation	119.95	122.83	99.33	--	110.41	117.35	99.95	95.83	103.84	117.91	99.86	97.52	103.60	
008N033W19K005S	SACR 4	Monitoring	Quarterly/Discrete	West San Antonio Basin	220	Paso Robles Formation	95.70	97.73	96.15	--	90.53	91.87	92.38	91.58	91.51	93.26	93.18	93.04	94.23	
008N033W19K006S	SACR 5	Monitoring	Quarterly/Discrete	West San Antonio Basin	110	Paso Robles Formation	99.98	100.47	100.87	95.86	91.91	94.34	95.62	96.16	95.74	97.06	98.61	98.47	99.13	
008N032W19M001S	SACC 1	Monitoring	Continuous/Transducer	Central San Antonio Basin	980	Paso Robles Formation	236.20	241.70	220.97	214.99	224.04	232.96	222.72	214.81	224.72	232.65	223.95	226.01	238.12	
008N032W19M002S	SACC 2	Monitoring	Quarterly/Discrete	Central San Antonio Basin	720	Paso Robles Formation	217.45	222.83	215.17	210.04	212.87	219.52	214.50	208.10	211.82	218.35	218.17	214.92	218.61	
008N032W19M003S	SACC 3	Monitoring	Quarterly/Discrete	Central San Antonio Basin	530	Paso Robles Formation	220.10	223.35	213.49	208.65	213.21	219.74	213.49	206.69	214.97	218.65	217.62	218.10	221.20	
008N032W19M004S	SACC 4	Monitoring	Quarterly/Discrete	Central San Antonio Basin	325	Paso Robles Formation	175.70	177.90	175.98	172.58	174.52	177.45	176.87	173.61	174.46	176.76	177.42	176.34	177.73	
008N032W19M005S	SACC 5	Monitoring	Quarterly/Discrete	Central San Antonio Basin	120	Paso Robles Formation	107.05	107.30	107.20	107.01	106.94	106.50	105.82	105.66	105.08	104.95	104.84	104.54	104.58	
--	White Hawk 1	Irrigation	Quarterly/Discrete	Central San Antonio Basin	560	Careaga Sand	125.50	126.50	125.10	123.96	123.96	124.58	123.29	122.81	122.32	122.78	122.09	121.37	121.60	
--	White Hawk 4a	Irrigation	Quarterly/Discrete	Central San Antonio Basin	--	Careaga Sand	--	--	--	--	--	--	--	--	93.61	94.48	93.12	92.48	93.16	White Hawk 4 replacement well.
--	Mesa Vineyard	Irrigation	Quarterly/Discrete	Central San Antonio Basin	--	Careaga Sand	219.65	220.50	216.10	215.85	--	219.17	216.91	214.89	215.50	216.23	217.19	215.61	215.24	Oil in well column.
008N033W02N001S	2N1	Irrigation	Quarterly/Discrete	Central San Antonio Basin	980	Careaga Sand	226.20	228.00	225.50	--	224.23	228.06	224.33	222.20	--	--	--	--	--	Inadequate clearance for sounder in access port. Monitoring expected to resume 3Q2025.
008N033W02R001S	2R1	Domestic	Quarterly/Discrete	Central San Antonio Basin	370	Careaga Sand	173.55	120.50	120.45	120.30	120.61	120.94	121.02	121.48	123.06	122.25	122.46	122.06	122.90	
--	Well 4	Irrigation	Quarterly/Discrete	Central San Antonio Basin	1,000	Careaga Sand	--	--	--	--	--	--	122.50	122.29	122.01	--	--	124.16	122.66	
008N033W10	4-Deer Field	Irrigation	Quarterly/Discrete	Central San Antonio Basin	490	Careaga Sand	65.90	68.00	28.61	25.59	27.53	30.39	29.48	26.75	27.02	35.41	29.44	28.46	29.62	
008N033W03L001S	4-Deer Highway	Irrigation	Quarterly/Discrete	Central San Antonio Basin	349	Careaga Sand	96.59	98.10	96.11	94.82	98.01	98.79	97.63	95.02	96.07	98.78	97.40	95.80	98.40	
--	Schaff Well	Monitoring	Quarterly/Discrete	Central San Antonio Basin	669	Careaga Sand	217.24	217.90	218.05	218.24	218.29	218.97	219.15	219.12	219.40	220.00	220.26	220.52	220.81	
008N034W14L001S	14L1	Monitoring	Continuous/Transducer	West San Antonio Basin	593	Careaga Sand	71.18	73.70	69.95	68.24	70.85	74.84	72.16	69.04	70.22	73.37	70.55	69.94	72.55	
008N034W17Q001S	17Q1	Monitoring	Quarterly/Discrete	West San Antonio Basin	48	Careaga Sand	15.40	--	--	13.31	13.72	14.80	15.21	12.96	13.20	14.32	14.80	14.57	14.80	
008N034W21A001S	21A1	Monitoring	Quarterly/Discrete	West San Antonio Basin	271	Careaga Sand	37.80	38.75	38.83	37.70	37.40	38.62	38.88	37.77	37.51	38.12	38.61	38.24	38.42	
008N034W17K002S	17K2	Monitoring	Quarterly/Discrete	West San Antonio Basin	60	Careaga Sand	7.13	7.30	7.40	7.38	7.30	7.31	7.31	7.33	--	7.25	7.26	7.31	7.31	
008N034W17E001S	17E1	Monitoring	Quarterly/Discrete	West San Antonio Basin	89	Careaga Sand	22.28	22.35	22.38	19.72	19.44	20.26	20.67	19.42	18.80	19.96	20.39	20.45	20.95	
008N034W16C002S	16C2	Monitoring	Continuous/Transducer	West San Antonio Basin	169	Careaga Sand	74.72	94.03	87.72	92.73	82.20	91.43	84.44	81.70	81.02	81.33	83.45	80.83	83.46	
008N034W16C004S	16C4	Monitoring	Continuous/Transducer	West San Antonio Basin	560	Careaga Sand	87.21	79.63	75.30	78.30	74.79	78.03	73.70	71.79	71.43	71.82	72.67	72.82	74.24	
008N034W17H001S	17H1	Monitoring	Quarterly/Discrete	West San Antonio Basin	61	Careaga Sand	17.81	18.81	18.90	13.24	13.94	15.65	16.43	13.19	14.33	15.59	16.61	16.58	16.92	
008N034W16F001S	16F1	Monitoring	Quarterly/Discrete	West San Antonio Basin	58	Careaga Sand	43.83	46.30	45.47	45.09	38.45	43.17	41.39	38.03	36.47	35.91	38.86	35.14	34.50	
008N034W16G003S	16G3	Monitoring	Continuous/Transducer	West San Antonio Basin	56	Careaga Sand	50.52	51.17	51.85	52.36	52.47	52.40	52.65	52.70	52.54	52.36	52.28	52.17	51.96	
008N033W13C001S	13C1	Irrigation	Continuous/Transducer	Central San Antonio Basin	1,070	Careaga Sand	190.20	188.00	187.30	--	188.40	186.08	185.94	185.39	184.99	185.58	185.75	185.10	--	No confirmation on correct access port on new wellhead.
008N033W07	Stephen's Well	Irrigation	Quarterly/Discrete	West San Antonio Basin	590	Careaga Sand	339.88	343.35	339.88	--	342.19	381.46	379.15	343.34	343.34	349.12	--	343.34	--	Well undergoing maintenance during monitoring event.
008N033W22K003S	22K3	Irrigation	Continuous/Transducer	Central San Antonio Basin	250	Paso Robles Formation	--	--	--	--	79.65	82.59	79.45	78.91	76.90	75.82	73.87	71.24	79.79	
008N033W13Q001S	13Q1	Irrigation	Quarterly/Discrete	Central San Antonio Basin	295	Paso Robles Formation	--	--	--	--	--	--	--	116.71	112.13	113.82	112.55	112.32	112.09	Oil in well column.
--	Char 1	Irrigation	Quarterly/Discrete	Central San Antonio Basin	330	Careaga Sand	--	--	--	--	--	--	--	--	--	--	99.03	96.72	97.88	Measured with airline.
008N032W30D001S	30D1	Monitoring	--	Central San Antonio Basin	895	Paso Robles Formation	--	--	--	--	--	--	--	--	--	--	--	--	--	
008N032W25D001S	25D1	Irrigation	--	East San Antonio Basin	700	Careaga Sand	--	--	--	--	--	--	--	--	--	--	--	--	--	
008N031W22J001S	22J1	Unknown	--	East San Antonio Basin	--	Careaga Sand	--	--	--	--	--	--	--	--	--	--	--	--	--	
008N031W22N001S	22N1	Unknown	--	East San Antonio Basin	175	Paso Robles Formation	--	--	--	--	--	--	--	--	--	--	--	--	--	
008N031W22M001S	22M1	Unknown	--	East San Antonio Basin	--	Careaga Sand	--	--	--	--	--	--	--	--	--	--	--	--	--	
008N034W24E001S	24E1	Monitoring	--	West San Antonio Basin	--	Careaga Sand	--	--	--	--	--	--	--	--	--	--	--	--	--	
008N033W20Q002S	20Q2	Irrigation	--	West San Antonio Basin	--	Paso Robles Formation	--	--	--	--	--	--	--	--	--	--	--	--	--	
--	VERNAS 1	Unknown	--	Central San Antonio Basin	--	--	--	--	--	--	--	--	--	--	--	--	--	--	--	
--	VERNAS 2	Unknown	--	Central San Antonio Basin	--	--	--	--	--	--	--	--	--	--	--	--	--	--	--	
--	HWY 101 CATTLE	Unknown	--	East San Antonio Basin	--	--	--	--	--	--	--	--	--	--	--	--	--	--	--	
008N032W27P003S	GUZMAN 2	Unknown	--	East San Antonio Basin	--	--	--	--	--	--	--	--	--	--	--	--	--	--	--	
008N032W30E005S	30E5	Unknown	--	Central San Antonio Basin	1,001	Paso Robles Formation	--	--	--	--	--	--	--	--	--	--	--	--	--	
008N033W25B005S	25B5	Unknown	--	Central San Antonio Basin	100	Paso Robles Formation	--	--	--	--	--	--	--	--	--	--	--	--	--	
008N032W28P004S	28P4	Unknown	--	East San Antonio Basin	524	Paso Robles Formation	--	--	--	--	--	--	--	--	--	--	--	--	--	
008N034W36R	Careaga Lease	Unknown	--	West San Antonio Basin	284	Careaga Sand	--	--	--	--	--	--	--	--	--	--	--	--	--	
008N32W17N001S	White Hawk 4	Irrigation	Quarterly/Discrete	Central San Antonio Basin	820	Careaga Sand	100.55	101.20	98.50	98.00	98.77	98.97	--	--	--	--	--	--	--	Well Destroyed December 2023
009N034W27L001S	27L1	Unknown	--	West San Antonio Basin	405	Careaga Sand	--	--	--	--	--	--	--	--	--	--	--	--	--	Well Destroyed March 2021
008N034W02M001S	2M1	Irrigation	Quarterly/Discrete	West San Antonio Basin	750	Paso Robles Formation	--	--	--	--	--	--	--	--	--	--	--	--	--	Monitoring discontinued due to risk of stuck sounder.
009N034W34P001S	34P1	Monitoring	Quarterly/Discrete	West San Antonio Basin	223	Careaga Sand	72	71	70	67	--	68	66	--	--	--	--	--	--	Obstruction or collapse at 72 feet below RPE.

Notes:	

Green highlighted cells indicate well access agreement has been acquired
Yellow highlighted cells indicate well access agreement is pending
Red highlighted cells indicate well access denied
Gray highlighted cells indicate well access not applicable
bgs = below ground surface
DTW = Depth to Water (feet below reference point elevation)
-- = unknown or not applicable

Table 2. Second Quarter 2025 Groundwater Level Measurements – Groundwater Elevation

State Well Number	Site Name	Well Type	Water Level Measurement Frequency/Type	Area	Total Depth (feet NAVD88)	Aquifer of Completion	MT Elevation (feet NAVD88)	MO Elevation (feet NAVD88)	GWE on 6/21/22 and 6/22/22	GWE on 9/15/22 and 9/16/22	GWE on 12/14/22 and 12/15/22	GWE on 3/15/23, 3/16/23 and 3/23/23	GWE on 6/20/23, 6/21/23 and 6/28/23	GWE on 9/12/23 and 9/13/23	GWE on 12/12/23 and 12/13/23	GWE on 2/27/24 and 2/28/24	GWE on 6/4/24 and 6/5/24	GWE on 8/27/24 and 8/28/24	GWE on 11/26/24 and 11/27/24	GWE on 2/25/25 and 2/26/25	GWE on 6/3/25 and 6/4/25	Notes on 6/3/25 and 6/4/25
009N034W34N002S	SAHC	Monitoring	Continuous/Transducer	West San Antonio Basin	363	Careaga Sand	358	--	381.41	381.27	381.14	380.91	381.00	381.28	381.48	381.82	382.28	382.80	383.56	384.29	--	Vegetation overgrown - could not safely access well.
008N034W21A002S	SASA	Monitoring	Continuous/Transducer	West San Antonio Basin	245	Careaga Sand	--	--	265.62	264.83	264.48	265.44	266.99	266.42	265.56	266.22	268.27	267.34	266.35	266.27	265.98	
008N034W14L002S	SAGR	Monitoring	Continuous/Transducer	West San Antonio Basin	240	Paso Robles Formation	--	--	265.05	262.67	263.83	265.37	267.37	267.24	267.74	268.93	269.42	268.25	268.14	268.39	266.83	
008N034W23H001S	SAHG	Monitoring	Continuous/Transducer	West San Antonio Basin	246	Paso Robles Formation	--	--	282.19	281.90	282.81	295.87	295.62	293.01	290.39	293.52	294.06	293.78	290.91	--	287.46	
008N033W22G001S	SALS	Monitoring	Continuous/Transducer	Central San Antonio Basin	390	Paso Robles Formation	397	--	419.82	419.92	419.57	428.11	429.97	430.62	429.43	432.38	433.09	431.30	429.63	428.87	427.85	
008N032W29L004S	SALA	Monitoring	Continuous/Transducer	Central San Antonio Basin	506	Paso Robles Formation	--	--	547.12	546.52	545.91	568.41	569.58	564.05	560.25	570.52	569.58	564.36	561.22	558.77	557.58	
008N033W19K002S	SACR 1	Monitoring	Continuous/Transducer	West San Antonio Basin	-327	Careaga Sand	291	--	310.77	306.92	314.32	--	313.92	308.08	313.14	313.14	312.65	307.76	311.84	314.28	311.46	
008N033W19K003S	SACR 2	Monitoring	Quarterly/Discrete	West San Antonio Basin	-177	Paso Robles Formation	--	--	280.52	278.49	289.24	--	284.44	282.43	288.72	289.74	286.15	277.14	288.71	289.36	283.67	
008N033W19K004S	SACR 3	Monitoring	Continuous/Transducer	West San Antonio Basin	13	Paso Robles Formation	233	--	241.86	238.98	262.48	--	251.40	244.46	261.86	265.98	257.97	243.90	261.95	264.29	258.21	
008N033W19K005S	SACR 4	Monitoring	Quarterly/Discrete	West San Antonio Basin	143	Paso Robles Formation	--	--	266.12	264.09	265.67	--	271.29	269.95	269.44	270.24	270.31	268.56	268.64	268.78	267.59	
008N033W19K006S	SACR 5	Monitoring	Quarterly/Discrete	West San Antonio Basin	252	Paso Robles Formation	--	--	265.26	264.77	264.37	269.38	273.33	270.90	269.62	269.08	269.50	268.18	266.63	266.77	266.11	
008N032W19M001S	SACC 1	Monitoring	Continuous/Transducer	Central San Antonio Basin	-394	Paso Robles Formation	348	--	348.84	343.34	364.07	370.05	361.00	352.08	362.32	370.23	360.32	352.39	361.09	359.03	346.92	
008N032W19M002S	SACC 2	Monitoring	Quarterly/Discrete	Central San Antonio Basin	-134	Paso Robles Formation	--	--	367.56	362.18	369.84	374.97	372.14	365.49	370.51	376.91	373.19	366.66	366.84	370.09	366.40	
008N032W19M003S	SACC 3	Monitoring	Quarterly/Discrete	Central San Antonio Basin	56	Paso Robles Formation	--	--	364.95	361.70	371.56	376.40	371.84	365.31	371.56	378.36	370.08	366.40	367.43	366.95	363.85	
008N032W19M004S	SACC 4	Monitoring	Quarterly/Discrete	Central San Antonio Basin	261	Paso Robles Formation	--	--	409.29	407.09	409.01	412.41	410.47	407.54	408.12	411.38	410.53	408.23	407.57	408.65	407.26	
008N032W19M005S	SACC 5	Monitoring	Quarterly/Discrete	Central San Antonio Basin	466	Paso Robles Formation	--	--	479.03	478.78	478.88	479.07	479.14	479.58	480.26	480.42	481.00	481.13	481.24	481.54	481.50	
--	White Hawk 1	Irrigation	Quarterly/Discrete	Central San Antonio Basin	241	Careaga Sand	--	--	676.86	675.86	677.26	678.40	678.40	677.78	679.07	679.55	680.04	679.58	680.27	680.99	680.76	
--	White Hawk 4a	Irrigation	Quarterly/Discrete	Central San Antonio Basin	--	Careaga Sand	--	--	--	--	--	--	--	--	--	--	687.39	687.69	689.05	689.69	689.01	White Hawk 4 replacement well.
--	Mesa Vineyard	Irrigation	Quarterly/Discrete	Central San Antonio Basin	--	Careaga Sand	--	--	587.29	586.29	590.69	590.94	--	587.62	589.88	591.90	591.29	590.56	588.59	590.14	590.51	Oil in well column.
008N033W02N001S	2N1	Irrigation	Quarterly/Discrete	Central San Antonio Basin	-153	Careaga Sand	--	--	601.05	599.25	601.75	--	603.02	599.19	602.92	605.05	--	--	--	--	--	Inadequate clearance for sounder in access port. Monitoring expected to resume 3Q2025.
008N033W02R001S	2R1	Domestic	Quarterly/Discrete	Central San Antonio Basin	406	Careaga Sand	--	--	603.85	656.90	656.95	657.10	656.79	656.46	656.38	655.92	654.34	655.15	655.48	655.90	655.06	
--	Well 4	Irrigation	Quarterly/Discrete	Central San Antonio Basin	1,000	Careaga Sand	--	--	--	--	--	--	--	--	596.57	596.78	597.06	--	--	594.91	595.33	
008N033W10	4-Deer Field	Irrigation	Quarterly/Discrete	Central San Antonio Basin	149	Careaga Sand	--	--	574.96	572.86	612.25	615.27	613.33	610.47	611.38	614.11	613.84	605.45	611.42	612.40	611.24	
008N033W03L001S	4-Deer Highway	Irrigation	Quarterly/Discrete	Central San Antonio Basin	340	Careaga Sand	--	--	593.72	592.21	594.20	595.49	592.30	591.52	592.68	595.29	594.24	591.53	592.91	594.51	591.91	
--	Schaff Well	Monitoring	Quarterly/Discrete	Central San Antonio Basin	-71	Careaga Sand	--	--	382.26	381.60	381.45	381.26	381.21	380.53	380.35	380.10	379.50	379.24	378.98	378.69		
008N034W14L001S	14L1	Monitoring	Continuous/Transducer	West San Antonio Basin	-264	Careaga Sand	--	--	259.24	256.72	260.47	262.18	259.57	255.58	258.26	261.38	260.20	257.05	259.87	260.48	257.87	
008N034W17Q001S	17Q1	Monitoring	Quarterly/Discrete	West San Antonio Basin	222	Careaga Sand	--	--	259.60	--	--	261.69	261.28	260.20	259.79	262.04	261.80	260.68	260.20	260.43	260.20	
008N034W21A001S	21A1	Monitoring	Quarterly/Discrete	West San Antonio Basin	30	Careaga Sand	--	--	265.97	265.02	264.94	266.07	266.37	265.15	264.89	266.00	266.26	265.65	265.16	265.53	265.35	
008N034W17K002S	17K2	Monitoring	Quarterly/Discrete	West San Antonio Basin	200	Careaga Sand	--	--	257.17	257.00	256.90	256.92	257.00	256.99	256.99	256.97	--	257.05	257.04	256.99	256.99	
008N034W17E001S	17E1	Monitoring	Quarterly/Discrete	West San Antonio Basin	154	Careaga Sand	--	--	224.82	224.75	224.72	227.38	227.66	226.84	226.43	227.68	228.30	227.14	226.71	226.65	226.15	
008N034W16C002S	16C2	Monitoring	Continuous/Transducer	West San Antonio Basin	160	Careaga Sand	--	--	255.44	236.13	242.44	237.43	247.96	238.73	245.72	248.46	249.14	248.83	246.71	249.33	246.70	
008N034W16C004S	16C4	Monitoring	Continuous/Transducer	West San Antonio Basin	-231	Careaga Sand	--	--	242.78	250.36	254.69	251.69	255.20	251.96	256.29	258.20	258.56	258.17	257.32	257.17	255.75	
008N034W17H001S	17H1	Monitoring	Quarterly/Discrete	West San Antonio Basin	199	Careaga Sand	--	--	246.79	245.79	245.70	251.36	250.66	248.95	248.17	251.41	250.27	249.01	247.99	248.02	247.68	
008N034W16F001S	16F1	Monitoring	Quarterly/Discrete	West San Antonio Basin	219	Careaga Sand	--	--	236.64	234.17	235.00	235.38	242.02	237.30	239.08	242.44	244.00	244.56	241.61	245.33	245.97	
008N034W16G003S	16G3	Monitoring	Continuous/Transducer	West San Antonio Basin	239	Careaga Sand	226	244	246.96	246.31	245.63	245.12	245.01	245.08	244.83	244.78	244.94	245.12	245.20	245.31	245.52	
008N033W13C001S	13C1	Irrigation	Continuous/Transducer	Central San Antonio Basin	-293	Careaga Sand	565	597	587.55	589.75	590.45	--	589.35	591.37	591.81	592.36	592.76	592.17	592.00	592.65	--	No confirmation on correct access port on new wellhead.
008N033W07	Stephen's Well	Irrigation	Quarterly/Discrete	West San Antonio Basin	83	Careaga Sand	--	--	334.13	330.67	334.13	--	331.82	292.55	294.86	330.67	330.67	324.89	--	330.67	--	Well undergoing maintenance during monitoring event.
008N033W22K003S	22K3	Irrigation	Continuous/Transducer	Central San Antonio Basin	203	Paso Robles Formation	344	370	--	--	--	--	373.68	370.74	373.88	374.42	376.43	377.51	379.46	382.09	373.54	
008N033W13Q001S	13Q1	Irrigation	Quarterly/Discrete	Central San Antonio Basin	367	Paso Robles Formation	--	--	--	--	--	--	--	--	--	546.61	551.19	549.50	550.79	551.02	551.23	Oil in well column.
--	Char 1	Irrigation	Quarterly/Discrete	Central San Antonio Basin	330	Careaga Sand	--	--	--	--	--	--	--	--	--	--	--	--	658.97	661.28	660.12	Measured with airline.
008N032W30D001S	30D1	Monitoring	--	Central San Antonio Basin	-355	Paso Robles Formation	345	388	--	--	--	--	--	--	--	--	--	--	--	--	--	
008N032W25D001S	25D1	Irrigation	--	East San Antonio Basin	65	Careaga Sand	634	661	--	--	--	--	--	--	--	--	--	--	--	--	--	
008N031W22J001S	22J1	Unknown	--	East San Antonio Basin	--	Careaga Sand	--	--	--	--	--	--	--	--	--	--	--	--	--	--	--	
008N031W22N001S	22N1	Unknown	--	East San Antonio Basin	1,026	Paso Robles Formation	--	--	--	--	--	--	--	--	--	--	--	--	--	--	--	
008N031W22M001S	22M1	Unknown	--	East San Antonio Basin	--	Careaga Sand	--	--	--	--	--	--	--	--	--	--	--	--	--	--	--	
008N034W24E001S	24E1	Monitoring	--	West San Antonio Basin	--	Careaga Sand	220	257	--	--	--	--	--	--	--	--	--	--	--	--	--	
008N033W20Q002S	20Q2	Irrigation	--	West San Antonio Basin	--	Paso Robles Formation	298	335	--	--	--	--	--	--	--	--	--	--	--	--	--	
--	VERNAS 1	Unknown	--	Central San Antonio Basin	--	--	--	--	--	--	--	--	--	--	--	--	--	--	--	--	--	
--	VERNAS 2	Unknown	--	Central San Antonio Basin	--	--	--	--	--	--	--	--	--	--	--	--	--	--	--	--	--	
--	HWY 101 CATTLE	Unknown	--	East San Antonio Basin	--	--	--	--	--	--	--	--	--	--	--	--	--	--	--	--	--	
008N032W27P003S	GUZMAN 2	Unknown	--	East San Antonio Basin	--	--	--	--	--	--	--	--	--	--	--	--	--	--	--	--	--	
008N032W30E005S	30E5	Unknown	--	Central San Antonio Basin	-458	Paso Robles Formation	--	--	--	--	--	--	--	--	--	--	--	--	--	--	--	
008N033W25B005S	25B5	Unknown	--	Central San Antonio Basin	426	Paso Robles Formation	--	--	--	--	--	--	--	--	--	--	--	--	--	--	--	
008N032W28P004S	28P4	Unknown	--	East San Antonio Basin	99	Paso Robles Formation	--	--	--	--	--	--	--	--	--	--	--	--	--	--	--	
008N034W36R	Careaga Lease	Unknown	--	West San Antonio Basin	344	Careaga Sand	--	--	--	--	--	--	--	--	--	--	--	--	--	--	--	
008N32W17N001S	White Hawk 4	Irrigation	Quarterly/Discrete	Central San Antonio Basin	-39	Careaga Sand	--	--	681.12	680.47	683.17	683.67	682.90	682.70	--	--	--	--	--	--	--	Well Destroyed December 2023
009N034W27L001S	27L1	Unknown	--	West San Antonio Basin	110	Careaga Sand	--	--	--	--	--	--	--	--	--	--	--	--	--	--	--	Well Destroyed March 2021
008N034W02M001S	2M1	Irrigation	Quarterly/Discrete	West San Antonio Basin	-331	Paso Robles Formation	244	286	--	--	--	--	--	--	--	--	--	--	--	--	--	Monitoring discontinued due to risk of stuck sounder.
009N034W34P001S	34P1	Monitoring	Quarterly/Discrete	West San Antonio Basin	230	Careaga Sand	361	386	383													

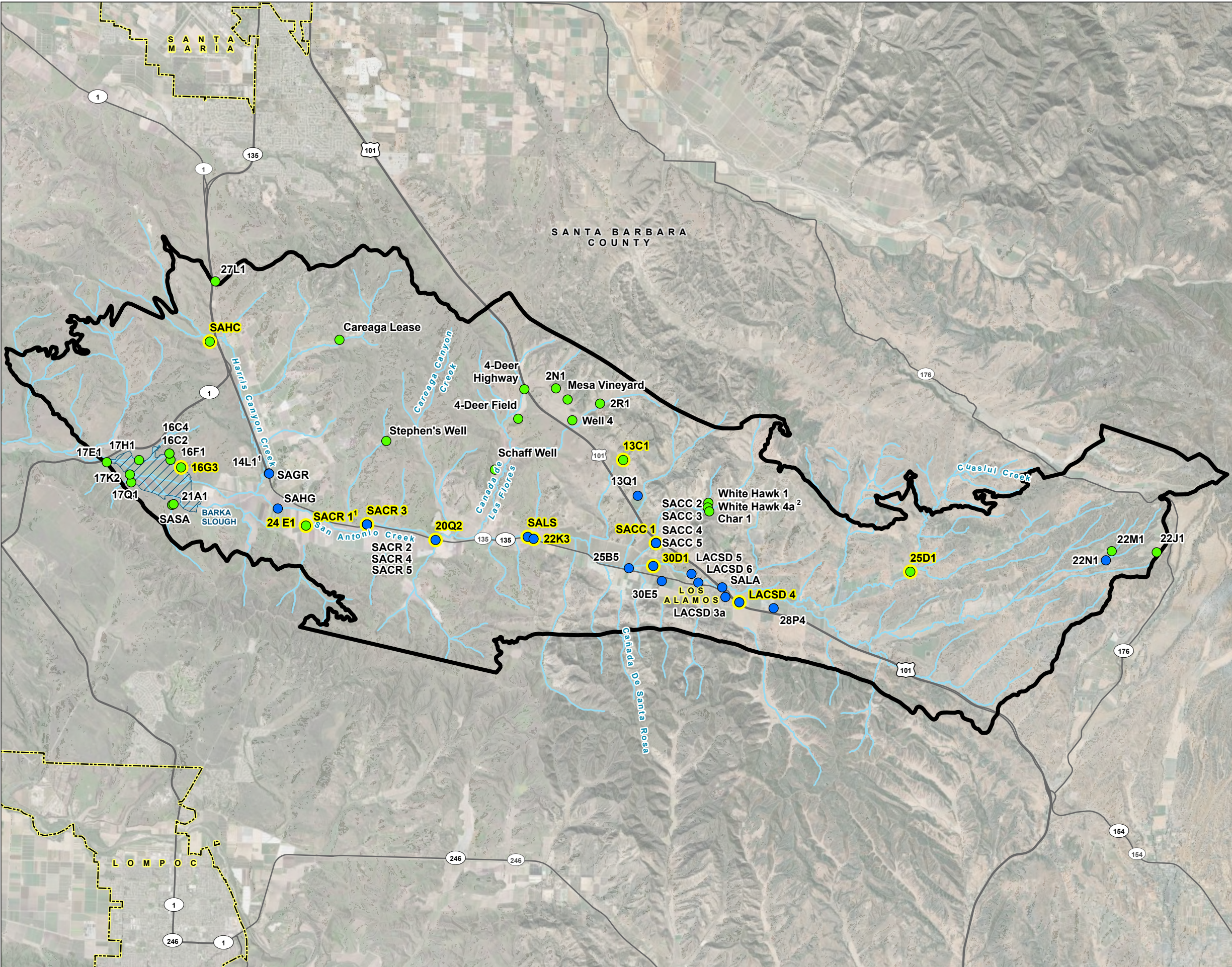


FIGURE 1
Wells Included in the
San Antonio Creek Valley
Groundwater Basin
Groundwater Level Monitoring
Network

San Antonio Creek Valley
Groundwater Basin Quarterly
Groundwater Level Monitoring

Second Quarter 2025

- LEGEND**
- Representative Well
 - All Other Features**
 - San Antonio Creek Valley Groundwater Basin
 - Barka Slough
 - City Boundary
 - Major Road
 - San Antonio Creek or Tributary
 - Wells (by screened aquifer)**
 - Screened Aquifer**
 - Paso Robles Formation
 - Careaga Sand

NOTES

1. SACR 1 and 14L1 are screened in the Careaga Sand.

2. White Hawk 4 was destroyed in December 2023. Replacement well White Hawk 4a was constructed and completed in June 2024.

